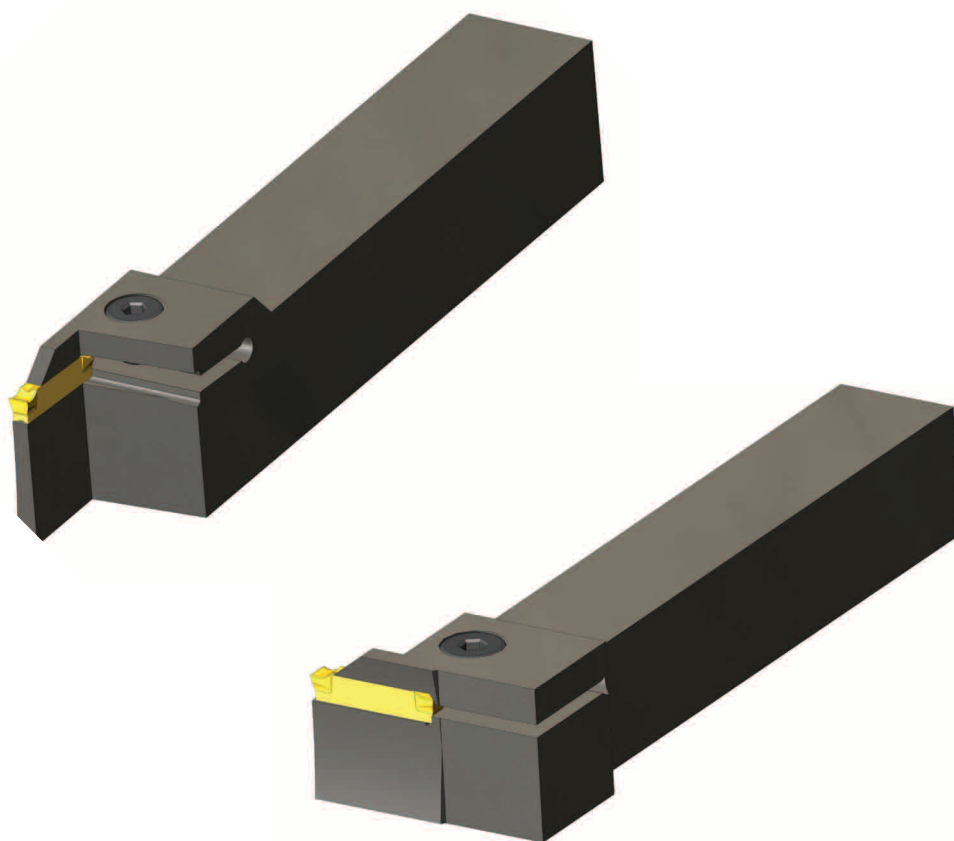
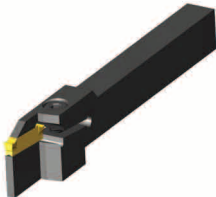

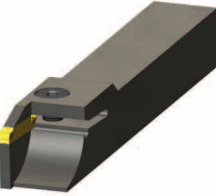


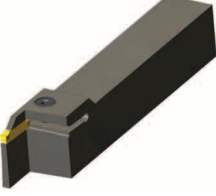
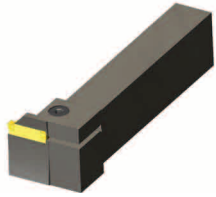




HEAD-Master[®]

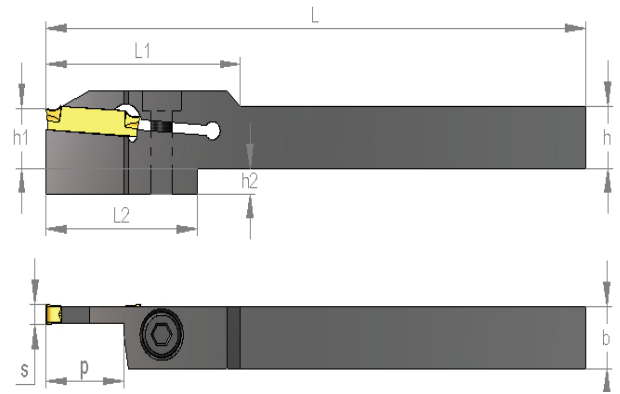
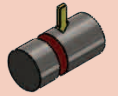


H




STECHWERKZEUGE GROOVING

Typ Type	Serie Series	Darstellung Figure	WSP Insert	Größe Size	Seite Page	Typ Type	Serie Series	Darstellung Figure	WSP Insert	Größe Size	Seite Page
Einstech- und Längsdrehen Grooving and turning (Außen / external)	MD - AXBR/L		MD 22.. MD 24..	Breite 2 - 6	570	Spannschaft für Abstechträger Bladebloc	MD - MTB-B				579
	MD - S AXBR/L		MD 22.. MD 24..	Breite 2 - 6	571						
Einstechdrehen Grooving (Außen / external)	MD - T AXBR/L		MD 22.. -1 MD 24.. -1	Breite 3 - 6	572						
Eckentfreistechen Grooving corner relief (Außen / external)	MD - P AXBR/L		MD22 MD24	Breite 3 - 6	573						
Axial - Einstechdrehen Face grooving Axial	MD - R AXBR/L		MD 22 MD 24	Breite 3 - 5	574						
	MD - R90 AXBR/L		MD 22 MD 24	Breite 3 - 5	575 - 576						
Einstech- und Längsdrehen Grooving and turning (Außen / external)	MD - IXBR/L		M10N MD22 MD24	Breite 2 - 6	577						
Abstechschwert Blades	MD - MTN-BS		MTN..	Breite 1,6 - 5,2	578						



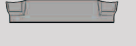



Einstech- und Längsdrehen (außen) Grooving and turning (external)



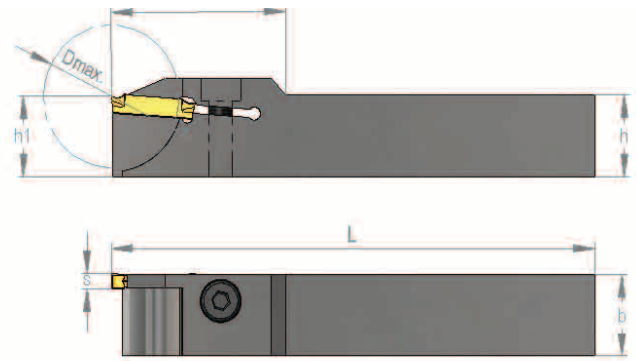
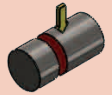
*abb. linke Ausführung

Bestell-Nr.: Order Code:	Abmessungen / Dimension (mm)									Wendeplatte Insert 	Schraube Screw 	Schlüssel Key 
	h	h1	h2	b	p	s	L	L1	L2			
MD-AXBR/L 1212-02	12	12	5	12	18	2	125	45	35	MD22..	M5 - 1	14
MD-AXBR/L 1212-02.5	12	12	5	12	18	2,5	125	45	35			
MD-AXBR/L 1212-03	12	12	5	12	18	3	125	45	35			
MD-AXBR/L 1212-04	12	12	5	12	19	4	125	45	35	MD24..	M5 - 1	14
MD-AXBR/L 1616-02	16	16		16	18	2	125	45				
MD-AXBR/L 1616-02.5	16	16		16	18	2,5	125	45				
MD-AXBR/L 1616-03	16	16		16	18	3	125	45		MD24..	M6 - 1	15
MD-AXBR/L 1616-04	16	16		16	19	4	125	45				
MD-AXBR/L 2020-02	20	20		20	18	2	125	45				
MD-AXBR/L 2020-02.5	20	20		20	18	2,5	125	45		MD22..	M6 - 1	15
MD-AXBR/L 2020-03	20	20		20	18	3	125	45				
MD-AXBR/L 2020-04	20	20		20	19	4	125	45				
MD-AXBR/L 2020-05	20	20		20	19	5	125	45		MD24..	M6 - 1	15
MD-AXBR/L 2020-06	20	20		20	19	6	125	45				
MD-AXBR/L 2525-02	25	25		25	18	2	150	45				
MD-AXBR/L 2525-02.5	25	25		25	18	2,5	150	45		MD22..	M6 - 1	15
MD-AXBR/L 2525-03	25	25		25	18	3	150	45				
MD-AXBR/L 2525-04	25	25		25	19	4	150	45				
MD-AXBR/L 2525-05	25	25		25	19	5	150	45		MD24..	M6 - 1	15
MD-AXBR/L 2525-06	25	25		25	19	6	150	45				
MD-AXBR/L 3225-05	32	32		25	19	5	170	45				
MD-AXBR/L 3225-06	32	32		25	19	6	170	45		MD24..	M6 - 1	15

Bestellbeispiel / Orderexample: MD-AXBR 1212-02

Form Figure	Abmessungen Dimensions					Bezeichnung Designation	Schraube	Schlüssel	Unbeschichtet Sorten Uncoated grades		Beschichtet Sorten coated grades								
	l	b	s	d1	r				CT28	K10	PTT20	PTV28	PTT35	PAP28	MTM10	KTE20			
		22,00	2,00			0,20	MD 22N 2.00S-0.20-T												
		22,00	2,50			0,20	MD 22N 2.50S-0.20-T												
		22,00	3,00			0,30	MD 22N 3.00S-0.30-T												
		24,00	4,00			0,40	MD 24N 4.00S-0.40-T												
		24,00	5,00			0,40	MD 24N 5.00S-0.40-T												
		24,00	6,00			0,40	MD 24N 6.00S-0.40-T												
		22,00	3,00			1,50	MD 22N 3.00S-1.50-R												
		24,00	4,00			2,00	MD 24N 4.00S-2.00-R												
		24,00	6,00			3,00	MD 24N 6.00S-3.00-R												

Einstech- und Längsdrehen (außen) Grooving and turning (external)



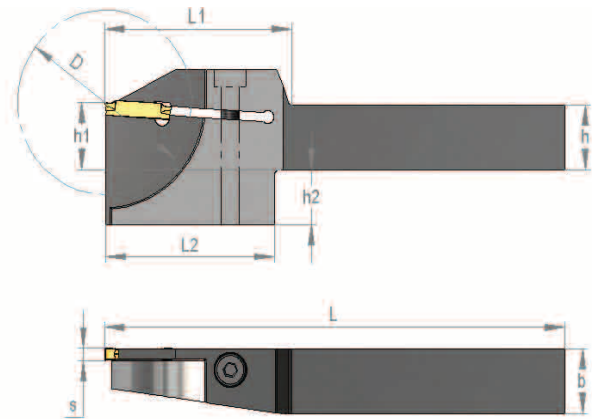
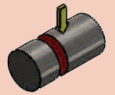
*abb. linke Ausführung

Bestell-Nr.: Order Code:	Abmessungen / Dimension (mm)									Wendepatte Insert	Schraube Screw	Schlüssel Key
	h	h1	h2	b	D _{max}	s	L	L1	L2			
MD-S-AXBR/L 1212-02	12	12	5	12	36	2	125	45	35	MD 22..	M5 - 1	I4
MD-S-AXBR/L 1212-02.5	12	12	5	12	36	2,5	125	45	35			
MD-S-AXBR/L 1212-03	12	12	5	12	36	3	125	45	35			
MD-S-AXBR/L 1616-02	16	16		16	36	2	125	45		MD 22..	M6 - 1	I5
MD-S-AXBR/L 1616-02.5	16	16		16	36	2,5	125	45				
MD-S-AXBR/L 1616-03	16	16		16	36	3	125	45				
MD-S-AXBR/L 2020-02	20	20		20	36	2	125	45		MD 24..	M6 - 1	I5
MD-S-AXBR/L 2020-02.5	20	20		20	36	2,5	125	45				
MD-S-AXBR/L 2020-03	20	20		20	36	3	125	45				
MD-S-AXBR/L 2020-04	20	20		20	38	4	125	45		MD 24..	M6 - 1	I5
MD-S-AXBR/L 2020-05	20	20		20	38	5	125	45				
MD-S-AXBR/L 2020-06	20	20		20	38	6	125	45				
MD-S-AXBR/L 2525-02	25	25		25	36	2	150	45		MD 22..	M6 - 1	I5
MD-S-AXBR/L 2525-02.5	25	25		25	36	2,5	150	45				
MD-S-AXBR/L 2525-03	25	25		25	36	3	150	45				
MD-S-AXBR/L 2525-04	25	25		25	38	4	150	45		MD 24..	M6 - 1	I5
MD-S-AXBR/L 2525-05	25	25		25	38	5	150	45				
MD-S-AXBR/L 2525-06	25	25		25	38	6	150	45				
MD-S-AXBR/L 3225-05	32	32		25	38	5	170	45		MD 24..	M6 - 1	I5
MD-S-AXBR/L 3225-06	32	32		25	38	6	170	45				




Bestellbeispiel / Orderexample: MD-S-AXBR 1212-02

Form Figure	Abmessungen Dimensions					Bezeichnung Designation	Schraube	Schlüssel	Unbeschichtet Sorten Uncoated grades		Beschichtet Sorten Coated grades											
	l	b	s	d1	r				CT28	K10	PTT20	PTV28	PTT35	PAP28	MTM10	KTE20						
		22,00	2,00			0,20	MD 22N 2.00S-0.20-T															
		22,00	2,50			0,20	MD 22N 2.50S-0.20-T															
		22,00	3,00			0,30	MD 22N 3.00S-0.30-T															
		24,00	4,00			0,40	MD 24N 4.00S-0.40-T															
		24,00	5,00			0,40	MD 24N 5.00S-0.40-T															
	24,00	6,00			0,40	MD 24N 6.00S-0.40-T																
		22,00	3,00			1,50	MD 22N 3.00S-1.50-R															
		24,00	4,00			2,00	MD 24N 4.00S-2.00-R															
		24,00	6,00			3,00	MD 24N 6.00S-3.00-R															


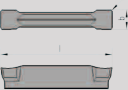

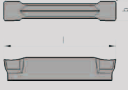
Einstechdrehen (außen) Grooving (external)



*abb. linke Ausführung

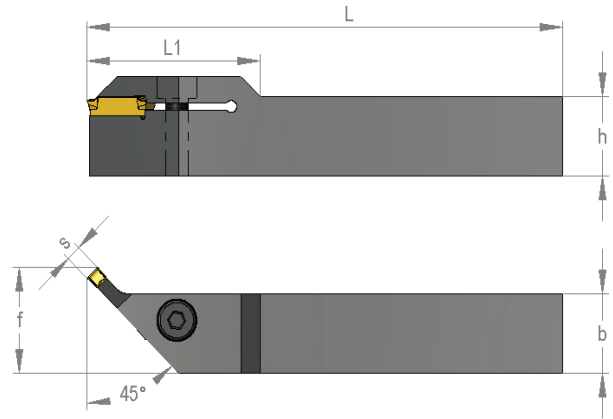
Bestell-Nr.: Order Code:	Abmessungen / Dimension (mm)									Wendeplatte Insert 	Schraube Screw 	Schlüssel Key 
	D	h	h1	h2	b	s	L	L1	L2			
MD-T-AXBR/L 2020-03	65	20	20	17	20	3	125	55	45	MD 22..-1	M6 - 1	I5
MD-T-AXBR/L 2020-04	65	20	20	17	20	4	125	55	45	MD 24..-1		
MD-T-AXBR/L 2020-05	80	20	20	18	20	5	15	60	50			
MD-T-AXBR/L 2020-06	80	20	20	18	20	6	150	60	50			
MD-T-AXBR/L 2525-03	65	25	25	12	25	3	150	55	45	MD 22..-1		
MD-T-AXBR/L 2525-04	65	25	25	12	25	4	150	55	45	MD 24..-1		
MD-T-AXBR/L 2525-05	80	25	25	18	25	5	160	60	50			
MD-T-AXBR/L 2525-06	80	25	25	18	25	6	160	60	50			

Bestellbeispiel / Orderexample: MD-T-AXBR 2020-03




	Form Figure	Abmessungen Dimensions					Bezeichnung Designation	Schraube	Schlüssel	Unbeschichtet Sorten Uncoated grades		Beschichtet Sorten coated grades										
		l	b	s	d1	r				CT28	K10	PTT20	PTV28	PTT35	PAP28	MTM10	KTE20					
		22,00	2,00			0,20	MD 22N 2.00S-0.20-T-1															
		22,00	2,50			0,20	MD 22N 2.50S-0.20-T-1															
		22,00	3,00			0,30	MD 22N 3.00S-0.30-T-1															
		24,00	4,00			0,40	MD 24N 4.00S-0.40-T-1															
		24,00	5,00			0,40	MD 24N 5.00S-0.40-T-1															
		24,00	6,00			0,40	MD 24N 6.00S-0.40-T-1															
		22,00	3,00			1,50	MD 22N 3.00S-1.50-R-1															
		24,00	4,00			2,00	MD 24N 4.00S-2.00-R-1															
		24,00	6,00			3,00	MD 24N 6.00S-3.00-R-1															

H

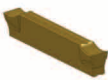
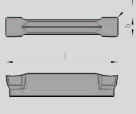

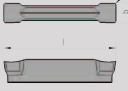
Eckenfreistechen (außen) Grooving corner relief (external)



*abb. linke Ausführung

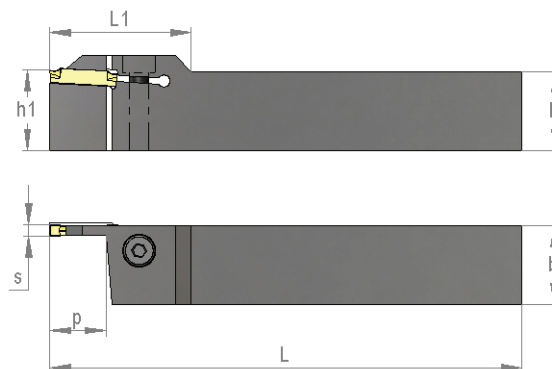
Bestell-Nr.: Order Code:	Abmessungen / Dimension (mm)							Wendeplatte Insert 	Schraube Screw 	Schlüssel Key 
	h	b	f	pmax	s	L	L1			
MD-P-AXBR/L 1616-03	16	16	22	1	3	125	45	MD 22..	M6 - 1	15
MD-P-AXBR/L 1616-04	16	16	22	1,5	4	125	45	MD 24..		
MD-P-AXBR/L 1616-05	16	16	22	2	5	125	45			
MD-P-AXBR/L 1616-06	16	16	22	2	6	125	45			
MD-P-AXBR/L 2020-03	20	20	26	1	3	125	45	MD 22..		
MD-P-AXBR/L 2020-04	20	20	26	1,5	4	125	45	MD 24..		
MD-P-AXBR/L 2020-05	20	20	26	2	5	125	45			
MD-P-AXBR/L 2020-06	20	20	26	2	6	125	45			
MD-P-AXBR/L 2525-03	25	25	31	1	3	150	45	MD 22..		
MD-P-AXBR/L 2525-04	25	25	31	1,5	4	150	45	MD 24..		
MD-P-AXBR/L 2525-05	25	25	31	2	5	150	45			
MD-P-AXBR/L 2525-06	25	25	31	2	6	150	45			

Bestellbeispiel / Orderexample: MD-P-AXBR 1616-03




	Form Figure	Abmessungen Dimensions					Bezeichnung Designation	Schraube	Schlüssel	Unbeschichtet Sorten Uncoated grades		Beschichtet Sorten coated grades									
		l	b	s	d1	r				CT28	K10	PTT20	PTV28	PTT35	PAP28	MTM10	KTE20				
		22,00	2,00			0,20	MD 22N 2.00S-0.20-T														
		22,00	2,50			0,20	MD 22N 2.50S-0.20-T														
		22,00	3,00			0,30	MD 22N 3.00S-0.30-T														
		24,00	4,00			0,40	MD 24N 4.00S-0.40-T														
		24,00	5,00			0,40	MD 24N 5.00S-0.40-T														
		24,00	6,00			0,40	MD 24N 6.00S-0.40-T														
		22,00	3,00			1,50	MD 22N 3.00S-1.50-R														
		24,00	4,00			2,00	MD 24N 4.00S-2.00-R														
		24,00	6,00			3,00	MD 24N 6.00S-3.00-R														

H

Axial- Einstechdrehen Face grooving



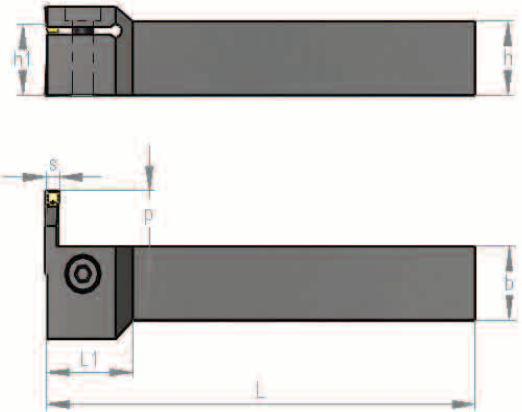
*abb. linke Ausführung

Bestell-Nr.: Order Code:	Abmessungen / Dimension (mm)								Wendeplatte Insert 	Schraube Screw 	Schlüssel Key 
	h	h1	b	Dmin - Dmax	p	s	L	L1			
MD-R-AXBR/L 2020-3.25	20	20	20	19-30	18	3	125	45	MD 22..	M6 - 1	I5
MD-R-AXBR/L 2020-3.30	20	20	20	24-38	18	3	125	45			
MD-R-AXBR/L 2020-3.38	20	20	20	32-48	18	3	125	45			
MD-R-AXBR/L 2020-3.48	20	20	20	42-60	18	3	125	45			
MD-R-AXBR/L 2020-3.60	20	20	20	54-75	18	3	125	45			
MD-R-AXBR/L 2020-3.75	20	20	20	69-100	18	3	125	45			
MD-R-AXBR/L 2020-3.100	20	20	20	94-200	19	3	125	45			
MD-R-AXBR/L 2020-4.34	20	20	20	26-34	19	4	125	45	MD 24..		
MD-R-AXBR/L 2020-4.40	20	20	20	32-40	19	4	125	45			
MD-R-AXBR/L 2020-4.48	20	20	20	40-48	19	4	125	45			
MD-R-AXBR/L 2020-4.60	20	20	20	52-60	19	4	125	45			
MD-R-AXBR/L 2020-4.75	20	20	20	67-150	19	4	125	45			
MD-R-AXBR/L 2020-4.150	20	20	20	142-450	19	4	125	45			
MD-R-AXBR/L 2020-5.42	20	20	20	32-55	19	5	125	45			
MD-R-AXBR/L 2020-5.55	20	20	20	45-75	19	5	125	45			
MD-R-AXBR/L 2020-5.75	20	20	20	65-150	19	5	125	45			
MD-R-AXBR/L 2525-3.25	25	25	25	19-30	18	3	150	45	MD 22..	M6-1	I5
MD-R-AXBR/L 2525-3.30	25	25	25	24-38	18	3	150	45			
MD-R-AXBR/L 2525-3.38	25	25	25	32-48	18	3	150	45			
MD-R-AXBR/L 2525-3.48	25	25	25	42-60	18	3	150	45			
MD-R-AXBR/L 2525-3.60	25	25	25	54-75	18	3	150	45			
MD-R-AXBR/L 2525-3.75	25	25	25	69-100	18	3	150	45			
MD-R-AXBR/L 2525-3.100	25	25	25	94-200	18	3	150	45			
MD-R-AXBR/L 2525-4.34	25	25	25	26-40	19	4	150	45	MD 24..		
MD-R-AXBR/L 2525-4.40	25	25	25	32-48	19	4	150	45			
MD-R-AXBR/L 2525-4.48	25	25	25	40-60	19	4	150	45			
MD-R-AXBR/L 2525-4.60	25	25	25	52-75	19	4	150	45			
MD-R-AXBR/L 2525-4.75	25	25	25	67-150	19	4	150	45			
MD-R-AXBR/L 2525-4.150	25	25	25	142-450	19	4	150	45			
MD-R-AXBR/L 2525-4.450	25	25	25	442-...	19	4	150	45			
MD-R-AXBR/L 2525-5.42	25	25	25	32-55	19	5	150	45			
MD-R-AXBR/L 2525-5.55	25	25	25	45-75	19	5	150	45			
MD-R-AXBR/L 2525-5.75	25	25	25	65-130	19	5	150	45			
MD-R-AXBR/L 2525-5.130	25	25	25	120-200	19	5	150	45			
MD-R-AXBR/L 2525-5.200	25	25	25	190-450	19	5	150	45			
MD-R-AXBR/L 2525-5.450	25	25	25	440-....	19	5	150	45			

Bestellbeispiel / Orderexample: MD-R-AXBR 2020-03

H

Axial- Einstechdrehen Face grooving



*abb. linke Ausführung

Bestell-Nr.: Order Code:	Abmessungen / Dimension (mm)								Wendepatte Inset	Schraube Screw	Schlüssel Key
	h	h1	b	Dmin - Dmax	p	s	L	L1			
MD-R90-AXBR/L 2020-3.25	20	20	20	19-30	15	3	125	25	MD 22..	M6 - 1	15
MD-R90-AXBR/L 2020-3.30	20	20	20	24-35	15	3	125	25			
MD-R90-AXBR/L 2020-3.35	20	20	20	29-42	15	3	125	25			
MD-R90-AXBR/L 2020-3.42	20	20	20	36-50	15	3	125	25			
MD-R90-AXBR/L 2020-3.50	20	20	20	44-58	15	3	125	25			
MD-R90-AXBR/L 2020-3.58	20	20	20	52-66	15	3	125	25			
MD-R90-AXBR/L 2020-3.66	20	20	20	60-75	15	3	125	25			
MD-R90-AXBR/L 2020-3.75	20	20	20	69-100	15	3	125	25			
MD-R90-AXBR/L 2020-4.42	20	20	20	34-50	15	4	125	25	MD 24..		
MD-R90-AXBR/L 2020-4.50	20	20	20	42-58	15	4	125	25			
MD-R90-AXBR/L 2020-4.58	20	20	20	50-66	15	4	125	25			
MD-R90-AXBR/L 2020-4.66	20	20	20	58-75	15	4	125	25			
MD-R90-AXBR/L 2020-4.75	20	20	20	67-100	15	4	125	25			
MD-R90-AXBR/L 2020-4.100	20	20	20	92-200	15	4	125	25			
MD-R90-AXBR/L 2020-5.42	20	20	20	32-55	15	5	125	25			
MD-R90-AXBR/L 2020-5.50	20	20	20	40-58	15	5	125	25			
MD-R90-AXBR/L 2020-5.58	20	20	20	48-66	15	5	125	25			
MD-R90-AXBR/L 2020-5.66	20	20	20	56-75	15	5	125	25			
MD-R90-AXBR/L 2020-5.75	20	20	20	65-100	15	5	125	25			
MD-R90-AXBR/L 2020-5.100	20	20	20	90-200	15	5	125	25			
MD-R90-AXBR/L 2525-3.25	25	25	25	19-30	15	3	150	25	MD 22..	M6 - 2	15
MD-R90-AXBR/L 2525-3.30	25	25	25	24-35	15	3	150	25			
MD-R90-AXBR/L 2525-3.35	25	25	25	29-42	15	3	150	25			
MD-R90-AXBR/L 2525-3.42	25	25	25	36-50	15	3	150	25			
MD-R90-AXBR/L 2525-3.50	25	25	25	44-58	15	3	150	25			
MD-R90-AXBR/L 2525-3.58	25	25	25	52-66	15	3	150	25			
MD-R90-AXBR/L 2525-3.66	25	25	25	60-75	15	3	150	25			
MD-R90-AXBR/L 2525-3.75	25	25	25	69-100	15	3	150	25			
MD-R90-AXBR/L 2525-4.42	25	25	25	34-50	15	4	150	25	MD 24..		
MD-R90-AXBR/L 2525-4.50	25	25	25	42-58	15	4	150	25			
MD-R90-AXBR/L 2525-4.58	25	25	25	50-66	15	4	150	25			
MD-R90-AXBR/L 2525-4.66	25	25	25	58-75	15	4	150	25			
MD-R90-AXBR/L 2525-4.75	25	25	25	67-100	15	4	150	25			
MD-R90-AXBR/L 2525-4.100	25	25	25	92-200	15	4	150	25			
MD-R90-AXBR/L 2525-5.42	25	25	25	32-55	15	5	150	25			
MD-R90-AXBR/L 2525-5.50	25	25	25	40-58	15	5	150	25			
MD-R90-AXBR/L 2525-5.58	25	25	25	48-66	15	5	150	25			
MD-R90-AXBR/L 2525-5.66	25	25	25	56-75	15	5	150	25			
MD-R90-AXBR/L 2525-5.75	25	25	25	65-100	15	5	150	25			
MD-R90-AXBR/L 2525-5.100	25	25	25	90-200	15	5	150	25			

H

Axial- Einstechdrehen Face grooving



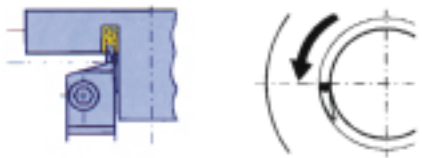
	Form Figure	Abmessungen Dimensions					Bezeichnung Designation	Schraube	Schlüssel	Unbeschichtet Sorten Uncoated grades		Beschichtet Sorten Coated grades					
		l	b	s	d1	r				CT28	K10	PTT20	PTV28	PTT35	PAP28	MTM10	KTE20
		22,00	2,00			0,20	MD 22N 2.00S-0.20-T						■	■			■
		22,00	2,50			0,20	MD 22N 2.50S-0.20-T						■	■			■
		22,00	3,00			0,30	MD 22N 3.00S-0.30-T						■	■			■
		24,00	4,00			0,40	MD 24N 4.00S-0.40-T						■	■			■
		24,00	5,00			0,40	MD 24N 5.00S-0.40-T						■	■			■
		24,00	6,00			0,40	MD 24N 6.00S-0.40-T						■	■			■
		22,00	3,00			1,50	MD 22N 3.00S-1.50-R						■	■			■
		24,00	4,00			2,00	MD 24N 4.00S-2.00-R						■	■			■
		24,00	6,00			3,00	MD 24N 6.00S-3.00-R						■	■			■

Einsatzbeispiele für Axial- Einstechdrehen Examples for face grooving

MD-R-AXBL 2525 -03

↓
Plattenbreite
width of insert

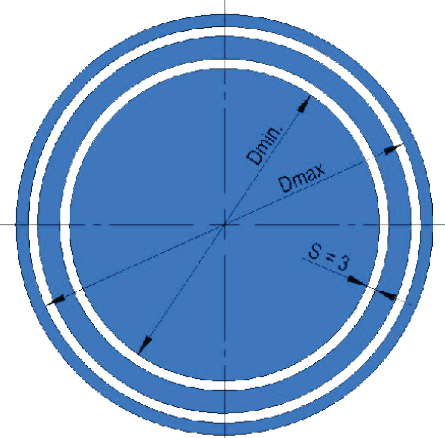
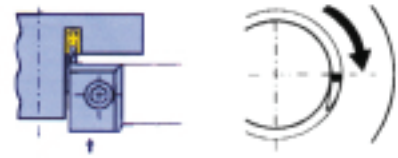
Linkslauf
turning left



MD-R90-AXBR 2525 -03

↓
Plattenbreite
width of insert

Rechtslauf
turning right

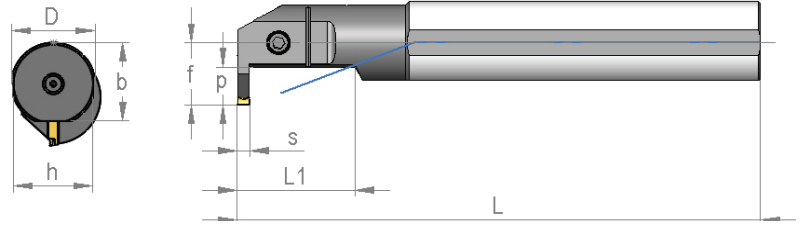
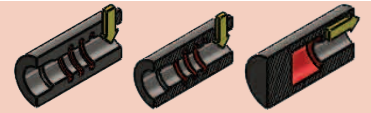


Zum Beispiel:
1. bei Fertigung von Dmin 19mm wird Bearbeitungsdurchmesser 25mm programmiert.
2. bei Fertigung von Dmax 30mm wird Bearbeitungsdurchmesser 24mm programmiert.

For Example:
1. By production of Dmin 19mm is programmed working diameter 25mm
2. By production of Dmax 30mm is programmed working diameter 25mm

H

Einsteich- und Längsdrehen (innen) Grooving and turning (internal)



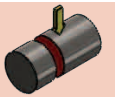
*abb. rechte Ausführung

Bestell-Nr.: Order Code:	Abmessungen / Dimension (mm)									Wendeplatte Insert	Schraube Screw	Schlüssel Key
	D min	D	h	b	f	s	p	L	L1			
MD-IXBR/L 0012-02	15,5	12	11	11,5	8,7	2	3	150	22	M10..	M4-1	I3
MD-IXBR/L 0012-02.5	15,5	12	11	11,5	8,7	2,5	3	150	22			
MD-IXBR/L 0012-03	15,5	12	11	11,5	8,7	3	3	150	22			
MD-IXBR/L 0016-02	20	16	15	15,5	11	2	4	170	26			
MD-IXBR/L 0016-02.5	20	16	15	15,5	11	2,5	4	170	26			
MD-IXBR/L 0016-03	20	16	15	15,5	11	3	4	170	26			
MD-IXBR/L 0020-02	25	20	18	18,5	13	2	7	180	40			
MD-IXBR/L 0020-02.5	25	20	18	18,5	13	2,5	7	180	40			
MD-IXBR/L 0020-03	25	20	18	18,5	13	3	7	180	40			
MD-IXBR/L 0025-02	32	25	23	23	17	2	10	180	50			
MD-IXBR/L 0025-02.5	32	25	23	23	17	2,5	10	180	50			
MD-IXBR/L 0025-03	32	25	23	23	17	3	10	180	50			
MD-IXBR/L 0025-04	32	25	23	23	17	4	10	180	50			
MD-IXBR/L 0032-03	40	32	30	30	22	3	12	200	64			
MD-IXBR/L 0032-04	40	32	30	30	22	4	12	200	64			
MD-IXBR/L 0032-05	40	32	30	30	22	5	12	200	64			
MD-IXBR/L 0032-06	40	32	30	30	22	6	12	200	64			
MD-IXBR/L 0040-04	52	40	38	38	30	4	16	250	80			
MD-IXBR/L 0040-05	52	40	38	38	30	5	16	250	80			
MD-IXBR/L 0040-06	52	40	38	38	30	6	16	250	80			

Form Figure	Abmessungen Dimensions					Bezeichnung Designation	Schraube	Schlüssel	Unbeschichtet Sorten Uncoated grades		Beschichtet Sorten coated grades								
	l	b	s	d1	r				CT28	K10	PTT20	PTV28	PTT35	PAP28	MTM10	KTE20			
	10,00	2,00			0,20	M10N 2.00S - 0.20-TI													
	10,00	2,50			0,20	M10N 2.50S - 0.20-TI													
	10,00	3,00			0,30	M10N 3.00S - 0.30-TI													
	22,00	2,00			0,20	MD 22N 2.00S-0.20-TI													
	22,00	2,50			0,20	MD 22N 2.50S-0.20-TI													
	22,00	3,00			0,30	MD 22N 3.00S-0.30-TI													
	24,00	4,00			0,40	MD 24N 4.00S-0.40-TI													
	24,00	5,00			0,40	MD 24N 5.00S-0.40-TI													
	24,00	6,00			0,40	MD 24N 6.00S-0.40-TI													
	10,00	3,00			1,50	M10N 3.00S - 1.50-R-TI													
	22,00	3,00			1,50	MD 22N 3.00S-1.50-R-TI													
	24,00	4,00			2,00	MD 24N 4.00S-2.00-R-TI													
	24,00	6,00			3,00	MD 24N 6.00S-3.00-R-TI													

H

Abstechschwert Blades



Bestell-Nr.: Order Code:	Abmessungen / Dimension (mm)					Wendeplatte Insert	Schlüssel Key
	H	W	L	h	Fig.		
MD-MTN-BS 226	26	1,6	110	21	2	MTN 200T / R / L	M-HK15
MD-MTN-BS 326	26	2,4	110	21	2	MTN 300T / R / L	
MD-MTN-BS 426	26	3,2	110	21	2	MTN 400T / R / L	
MD-MTN-BS 526	26	4	110	21	2	MTN 500T / R / L	
MD-MTN-BS 626	26	5,2	110	21	2	MTN 600T / R / L	
MD-MTN-BS 232	32	1,6	150	25	2	MTN 200T / R / L	
MD-MTN-BS 332	32	2,4	150	25	2	MTN 300T / R / L	
MD-MTN-BS 432	32	3,2	150	25	2	MTN 400T / R / L	
MD-MTN-BS 532	32	4	150	25	2	MTN 500T / R / L	
MD-MTN-BS 632	32	5,2	150	25	2	MTN 600T / R / L	

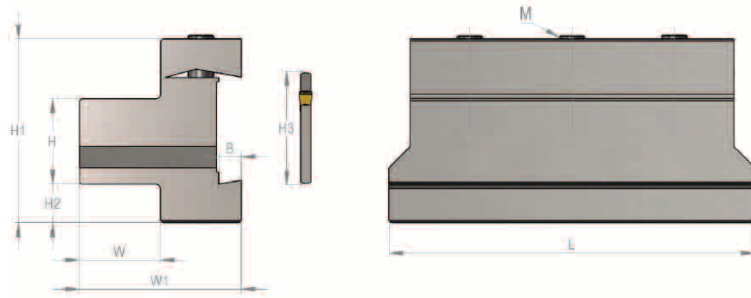
Bestellbeispiel / Orderexample: MD-MTN-BS 226


Abstechplatten Bladeinserts

Form Figure	Abmessungen Dimensions					Bezeichnung Designation	Schlüssel	Schraube	Unbeschichtet Sorten Uncoated grades			Beschichtet Sorten coated grades			
	b	l	r						K10			PTV28	PTT35	PAP28	MTM10
	2,2	9,3	0,20			MTN 200 T	M-HK 15					■			■
	2,2	9,3	0,20			MTN 200 R	M-HK 15								
	2,2	9,3	0,20			MTN 200 L	M-HK 15								
	3,1	11,3	0,20			MTN 300 T	M-HK 15					■			■
	3,1	11,3	0,20			MTN 300 R	M-HK 15								
	3,1	11,3	0,20			MTN 300 L	M-HK 15								
	4,1	11,3	0,25			MTN 400 T	M-HK 15					■			■
	4,1	11,3	0,25			MTN 400 R	M-HK 15								
	4,1	11,3	0,25			MTN 400 L	M-HK 15								
	5,1	11,4	0,30			MTN 500 T	M-HK 15					■			■
	5,1	11,4	0,30			MTN 500 R	M-HK 15								
	5,1	11,4	0,30			MTN 500 L	M-HK 15								
	6,4	11,4	0,35			MTN 600 T	M-HK 15					■			■
	6,4	11,4	0,35			MTN 600 R	M-HK 15								
	6,4	11,4	0,35			MTN 600 L	M-HK 15								

H

Spannschaft für Abstechträger Bladebloc



Bestell-Nr.: Order Code:	Abmessungen / Dimension (mm)									Abstechhalter Blades	Schlüssel Key 
	H	W	W1	H1	H2	H3	L	B	M		
MD-MTB-B 1626	16	12	30	43	13	26	86	5,3	3-M6	MD-MTN-B MD-MTN-BS	15
MD-MTB-B 2026	20	19	38	43	9	26	86	5,3	3-M6		
MD-MTB-B 2032	20	19	38	50	13	32	100	5,3	4-M6		
MD-MTB-B 2526	25	23	42	43	4	26	86	5,3	4-M6		
MD-MTB-B 2532	25	23	42	50	9	32	110	5,3	4-M6		
MD-MTB-B 3232	32	30	48	54	5	32	110	5,3	4-M6		

Bestellbeispiel / Orderexample: MD-MTB-B 1626