

NUTEN- UND TRENNFRÄSER

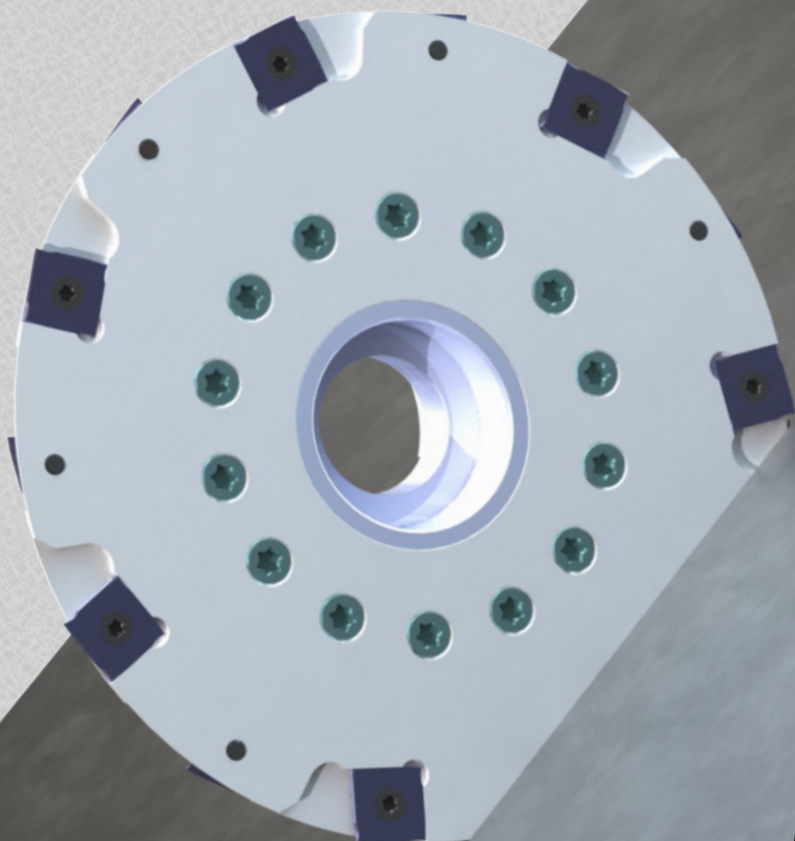
// GROOVING CUTTER //

AB 2MM!

UP 2MM!



SERIE 1119



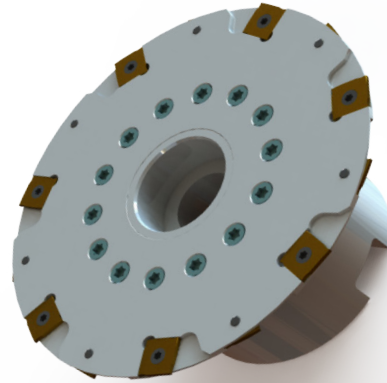
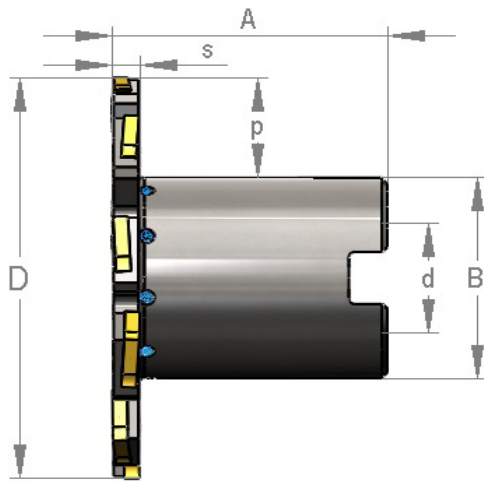
TRENNEN und NUTEN
ab 2mm Breite
mit geschraubten
ISO-WENDEPLATTEN!

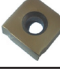


Grooving
up 2mm size
with screwed
ISO-INSERTS!

INNOVATION!

DIE WELTNEUHEIT!

// Serie 1119



Bestell-Nr.: Order Code:	Abmessungen / Dimension (mm)								Wendepatte Insert 	M-BT06 = 0,6Nm M-BT09 = 1,4Nm	Schraube Screw 	Schlüssel Key 
	D	d	s	A	B	Z	K	p				
	linke WP left insert	rechte WP right insert										
1119 M-W-63-02	63	22	2	35	30	8	4	15	SNHX 1111T-90 L..	SNHX 1111T-90 R..	M-VTX 302	M-BT06
1119 M-W-63-02,5	63	22	2,5	35	30	8	4	15	SNHX 1113T-90 L..	SNHX 1113T-90 R..	M-VTX 3022	M-BT06
1119 M-W-63-03	63	22	3	35	30	8	4	15	SNHX 1116T-90 L..	SNHX 1116T-90 R..	M-VTX 303	M-BT09
1119 M-W-63-03.5	63	22	3,5	35	30	8	4	15	SNHX 1119T-90 L..	SNHX 1119T-90 R..	M-VTX 305	M-BT09
1119 M-W-80-02	80	22	2	50	39	10	5	19	SNHX 1111T-90 L..	SNHX 1111T-90 R..	M-VTX 302	M-BT06
1119 M-W-80-02,5	80	22	2,5	50	39	10	5	19	SNHX 1113T-90 L..	SNHX 1113T-90 R..	M-VTX 3022	M-BT06
1119 M-W-80-03	80	22	3	50	39	10	5	19	SNHX 1116T-90 L..	SNHX 1116T-90 R..	M-VTX 303	M-BT09
1119 M-W-80-03.5	80	22	3,5	50	39	10	5	19	SNHX 1119T-90 L..	SNHX 1119T-90 R..	M-VTX 305	M-BT09
1119 M-W-100-02	100	27	2	50	48	12	6	25	SNHX 1111T-90 L..	SNHX 1111T-90 R..	M-VTX 302	M-BT06
1119 M-W-100-02,5	100	27	2,5	50	48	12	6	25	SNHX 1113T-90 L..	SNHX 1113T-90 R..	M-VTX 3022	M-BT06
1119 M-W-100-03	100	27	3	50	48	12	6	25	SNHX 1116T-90 L..	SNHX 1116T-90 R..	M-VTX 303	M-BT09
1119 M-W-100-03.5	100	27	3,5	50	48	12	6	25	SNHX 1119T-90 L..	SNHX 1119T-90 R..	M-VTX 305	M-BT09
1119 M-W-125-02	125	40	2	50	70	14	7	26,5	SNHX 1111T-90 L..	SNHX 1111T-90 R..	M-VTX 302	M-BT06
1119 M-W-125-02/32	125	32	2	50	58	14	7	33	SNHX 1111T-90 L..	SNHX 1111T-90 R..	M-VTX 302	M-BT06
1119 M-W-125-02,5	125	40	2,5	50	70	14	7	26,5	SNHX 1113T-90 L..	SNHX 1113T-90 R..	M-VTX 3022	M-BT06
1119 M-W-125-02,5/32	125	32	2,5	50	58	14	7	33	SNHX 1113T-90 L..	SNHX 1113T-90 R..	M-VTX 3022	M-BT06
1119 M-W-125-03	125	40	3	50	70	14	7	26,5	SNHX 1116T-90 L..	SNHX 1116T-90 R..	M-VTX 303	M-BT09
1119 M-W-125-03/32	125	32	3	50	58	14	7	33	SNHX 1116T-90 L..	SNHX 1116T-90 R..	M-VTX 303	M-BT09
1119 M-W-125-03.5	125	40	3,5	50	70	14	7	26,5	SNHX 1119T-90 L..	SNHX 1119T-90 R..	M-VTX 305	M-BT09
1119 M-W-125-03.5/32	125	32	3,5	50	58	14	7	33	SNHX 1119T-90 L..	SNHX 1119T-90 R..	M-VTX 305	M-BT09
1119 M-W-160-02	160	40	2	50	70	18	9	44	SNHX 1111T-90 L..	SNHX 1111T-90 R..	M-VTX 302	M-BT06
1119 M-W-160-02,5	160	40	2,5	50	70	18	9	44	SNHX 1113T-90 L..	SNHX 1113T-90 R..	M-VTX 3022	M-BT06
1119 M-W-160-03	160	40	3	50	70	18	9	44	SNHX 1116T-90 L..	SNHX 1116T-90 R..	M-VTX 303	M-BT09
1119 M-W-160-03.5	160	40	3,5	50	70	18	9	44	SNHX 1119T-90 L..	SNHX 1119T-90 R..	M-VTX 305	M-BT09

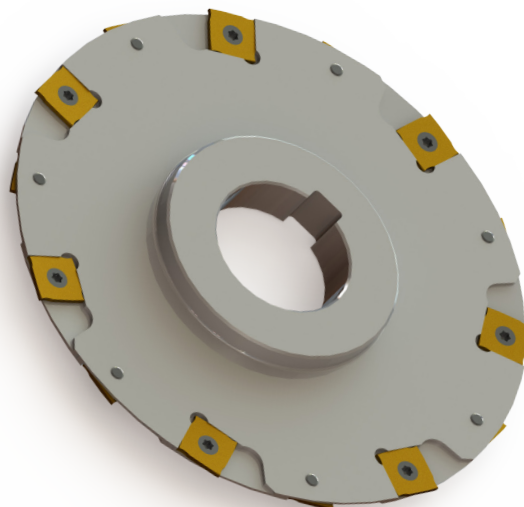
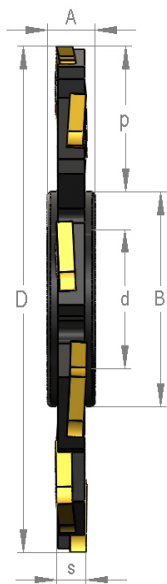
Bestellbeispiel / Orderexample: 1119 M-W-80-02

M-W = Kühlmittelbohrung / M-W = coolant bores

// Sondermaße durch Express-Lieferung schnellstens lieferbar!

// Special dimensions available in short delivery time!

// Serie 1119



Bestell-Nr.: Order Code:	Abmessungen / Dimension (mm)								Wendeplatte Insert		Schraube Screw	Schlüssel Key
	D	d	s	A	B	Z	K	p	linke WP left insert	rechte WP right insert		
	M-BT06 = 0,6Nm		M-BT09 = 1,4Nm									
1119-63-02	63	22	2	8	34	8	4	14	SNHX 1111T-90 L..	SNHX 1111T-90 R..	M-VTX 302	M-BT06
1119-63-02.5	63	22	2,5	8	34	8	4	14	SNHX 1113T-90 L..	SNHX 1113T-90 R..	M-VTX 3022	M-BT06
1119-63-03	63	22	3	8	34	8	4	14	SNHX 1116T-90 L..	SNHX 1116T-90 R..	M-VTX 303	M-BT09
1119-63-03.5	63	22	3,5	8	34	8	4	14	SNHX 1119T-90 L..	SNHX 1119T-90 R..	M-VTX 305	M-BT09
1119-80-02	80	22	2	8	34	10	5	22	SNHX 1111T-90 L..	SNHX 1111T-90 R..	M-VTX 302	M-BT06
1119-80-02.5	80	22	2,5	8	34	10	5	22	SNHX 1113T-90 L..	SNHX 1113T-90 R..	M-VTX 3022	M-BT06
1119-80-03	80	22	3	8	34	10	5	22	SNHX 1116T-90 L..	SNHX 1116T-90 R..	M-VTX 303	M-BT09
1119-80-03.5	80	22	3,5	8	34	10	5	22	SNHX 1119T-90 L..	SNHX 1119T-90 R..	M-VTX 305	M-BT09
1119-100-02	100	27	2	12	45	12	6	27	SNHX 1111T-90 L..	SNHX 1111T-90 R..	M-VTX 302	M-BT06
1119-100-02.5	100	27	2,5	12	45	12	6	27	SNHX 1113T-90 L..	SNHX 1113T-90 R..	M-VTX 3022	M-BT06
1119-100-03	100	27	3	12	45	12	6	27	SNHX 1116T-90 L..	SNHX 1116T-90 R..	M-VTX 303	M-BT09
1119-100-03.5	100	27	3,5	12	45	12	6	27	SNHX 1119T-90 L..	SNHX 1119T-90 R..	M-VTX 305	M-BT09
1119-125-02	125	32	2	12	58	14	7	33	SNHX 1111T-90 L..	SNHX 1111T-90 R..	M-VTX 302	M-BT06
1119-125-02.5	125	32	2,5	12	58	14	7	33	SNHX 1113T-90 L..	SNHX 1113T-90 R..	M-VTX 3022	M-BT06
1119-125-03	125	32	3	12	58	14	7	33	SNHX 1116T-90 L..	SNHX 1116T-90 R..	M-VTX 303	M-BT09
1119-125-03.5	125	32	3,5	12	58	14	7	33	SNHX 1119T-90 L..	SNHX 1119T-90 R..	M-VTX 305	M-BT09
1119-160-02	160	40	2	12	68	18	9	45	SNHX 1111T-90 L..	SNHX 1111T-90 R..	M-VTX 302	M-BT06
1119-160-02.5	160	40	2,5	12	68	18	9	45	SNHX 1113T-90 L..	SNHX 1113T-90 R..	M-VTX 3022	M-BT06
1119-160-03	160	40	3	12	68	18	9	45	SNHX 1116T-90 L..	SNHX 1116T-90 R..	M-VTX 303	M-BT09
1119-160-03.5	160	40	3,5	12	68	18	9	45	SNHX 1119T-90 L..	SNHX 1119T-90 R..	M-VTX 305	M-BT09

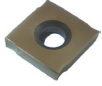
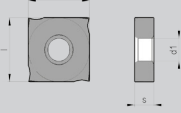
Bestellbeispiel / Orderexample: 1119-100-02

// Sondermaße durch Express-Lieferung schnellstens lieferbar!

// Special dimensions available in short delivery time!

// Serie 1119 - Wendeplatten

// Serie 1119 - Inserts

	Form Figure	Abmessungen Dimensions					Bezeichnung Designation	Schraube	Schlüssel	Unbeschichtet Sorten Uncoated grades		Beschichtet Sorten coated grades					
		l	d	s	d1	r				CT28	K10	PTT20	PTV28	PTT35	PAP28	MTM10	KTE20
 SNHX ... T-90..		11,00	11,00	1,10	4,40		SNHX 1111T - 90 R	M-VTX302	M-BT 06			■	■	■	■	■	
		11,00	11,00	1,35	4,40		SNHX 1113T - 90 R	M-VTX3022	M-BT 06			■	■	■	■	■	
		11,00	11,00	1,65	4,40		SNHX 1116T - 90 R	M-VTX 303	M-BT 09			■	■	■	■	■	
		11,00	11,00	1,90	4,40		SNHX 1119T - 90 R	M-VTX 305	M-BT 09			■	■	■	■	■	
		11,00	11,00	1,10	4,40		SNHX 1111T - 90 L	M-VTX 302	M-BT 06			■	■	■	■	■	
		11,00	11,00	1,35	4,40		SNHX 1113T - 90 L	M-VTX 3022	M-BT 06			■	■	■	■	■	
		11,00	11,00	1,65	4,40		SNHX 1116T - 90 L	M-VTX 303	M-BT 09			■	■	■	■	■	
		11,00	11,00	1,90	4,40		SNHX 1119T - 90 L	M-VTX 305	M-BT 09			■	■	■	■	■	

Vc (m/min)	Alu Kunststoff	Alu	Alu Guss	Stahl < 500 N	Stahl < 750 N	Stahl < 900 N	Stahl < 1100 N	Stahl < 1400 N	Stahl < 55 HRC	Stahl < 60 HRC	Stahl < 65 HRC	Stahl < 67 HRC	Stahl < 70 HRC	INOX < 900 N	INOX > 900 N	GG(G)	TITAN	Graphit GFK CFK	Öl	Emulsion	MMS	Trocken	Druckluft
	ISO-Code	N	N	N	P	P	P	P	H	H	H	H	H	M	M	K	S	N	■	■	■	■	■
PTV28					200	180	180	170												■			■
PTT35					200	180	180	170												■			■
PAP28														120	100					■			■
MTM10																180							■
KTE20	480	480	400																	■			■
K10																							
fz	0,1-0,15																		■ geeignet	□ bedingt geeignet			

Ebener Nutgrund
Plain on the ground

