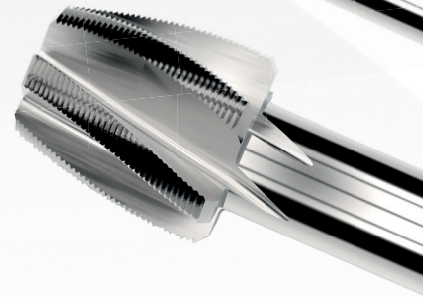
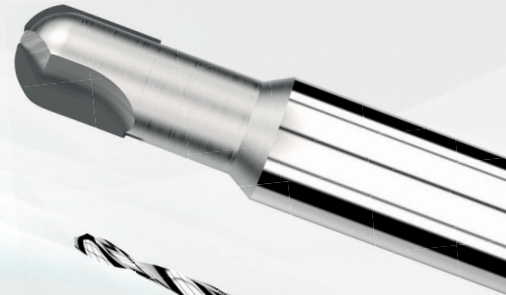
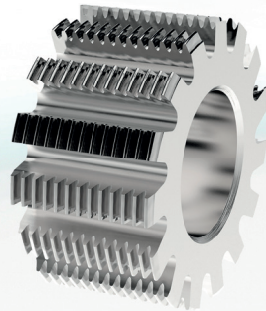
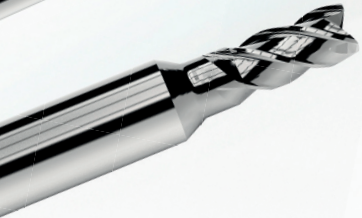
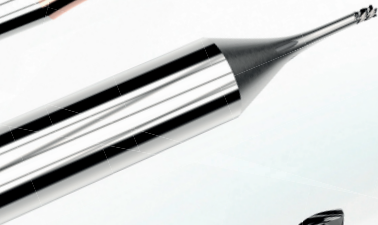
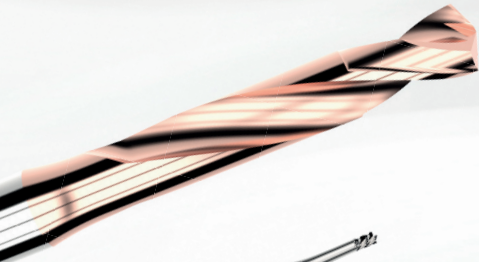
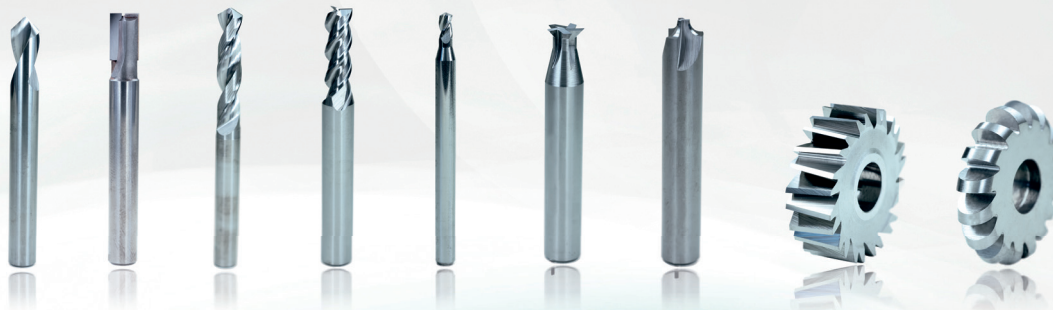


LB LOUIS BELET®
Swiss Cutting tools





STANDARD TOOLS

in solid carbide, PCD and ceramic

End mills

Drills

Tools with coolant holes

Circular saws

Thread tools

Expert Tools





SPECIAL TOOLS

in solid carbide, PCD and ceramic

Hob cutters for gears

Mills for snailing

Punch tools

Digging tools

Tools with coolant holes

Step drills



e-Shop

ON-LINE STOCK

View stock levels live and online for all standard products. You can also check the available quantities for the products you have been allocated! The e-shop option allows you to purchase the desired products directly online.

ToolFinder

FIND YOUR TOOL

Simplify your life and find the right tool for your application in just a few clicks! Simply enter the material to be machined and the dimensions and you will get our recommended cutting parameters in just a few clicks.

Re Grinding

RESHARPEN YOUR TOOLS

A small step towards the circular economy ! We offer a regrinding service for most tools, including those of our competitors.

Research & Development

INNOVATION

Innovation is in our DNA. Our R&D team regularly develops new products to keep you one step ahead of your competitors. Whether it is for the development of a machining strategy or for the realization of a specific tool, our teams are ready to meet your challenges.

Coating

COATING

The optimization of a tool's performance is linked to its coating. Our coating center is equipped with the latest technology and is managed by specialists in the field.

Consulting

ASK FOR ADVICE

Whether it's recommending cutting parameters, helping you get started or optimizing your machining strategy, our experts are at your side to solve your problems.



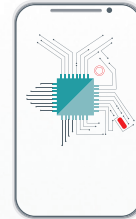
FIELDS OF APPLICATION



**WATCHMAKING AND JEWELLERY
PRODUCTION**



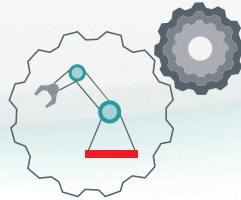
MEDTECH



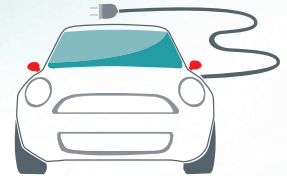
ELECTRONICS AND CONNECTORS



AERONAUTIC



MICROMECHANICS AND ROBOTICS



ELECTRIC MOBILITY



TECHNICAL REPRESENTATIVES

SINCE 1948

Founded in 1948 in Vendlincourt by Louis Bélet, the family business employs 150 people on two production sites. Today, it is managed by the two grandchildren of the founder.

FRENCH PART OF SWITZERLAND



Loïc Yerly
+41 (0)79 445 53 07
lyerly@louisbelet.ch



Hubert Choulat
+41 (0)78 708 54 01
hchoulat@louisbelet.ch



Raphaël Dubail
+41 (0) 79 511 98 83
rdubail@louisbelet.ch

INTERNATIONAL



Hervé Baour
+ 41 (0)78 646 94 18
hbaour@louisbelet.ch

THE QUEST OF EXCELLENCE

Bélet's spirit relies on the quest of excellence. In all our activities, we constantly focus on finding the best solutions, for our customers and our employees.

Quality and environmental management are testified by our ISO 9001:2015 and ISO 14001:2015 certifications.

GERMAN PART OF SWITZERLAND / GERMANY



Markus Ackermann
+41 (0)79 358 42 84
mackermann@louisbelet.ch



Sinan Akyol
+41 (0)79 859 33 57
sakyol@louisbelet.ch

TICINO / ITALY



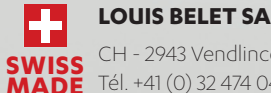
Luigino Gamba
+ 41 (0)79 362 86 09
lgamba@louisbelet.ch

FRANCE



Fabrice Berche
+33 (0)6 3017 32 87
fberche@louisbelet.ch

Authorized distributors list available on www.louisbelet.ch



LOUIS BELET SA

CH - 2943 Vendlincourt
Tél. +41 (0) 32 474 04 10

www.louisbelet.ch
info@louisbelet.ch

